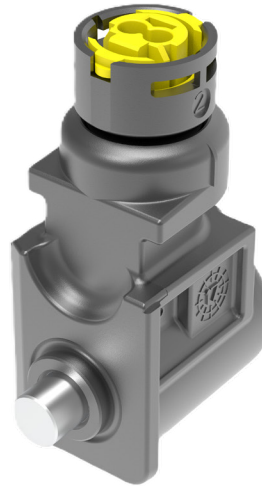


# Pyroswitch

## Release Units for Steering Columns and Pedal Systems

- Pull or push function
- Custom mechanical interface to customer system (e.g. slide-in, screw-on)
- Lateral Forces up to 1,5kN during activation
- static forces up to 5kN
- Pintype
- Lateral or axial electrical interface
- Enviromental testing for driver compartment
- possible other application: door unlock



### Key functional parameters

Extension stroke:	~7mm
Operation temperature:	-40°C up to +85°C
Extension time	< 3ms
Electrical connection:	Pin Type AK-2, ABX-5
Dimensions:	Customizable interface 42x18x44 mm (LxWxH)
Weight:	~70g

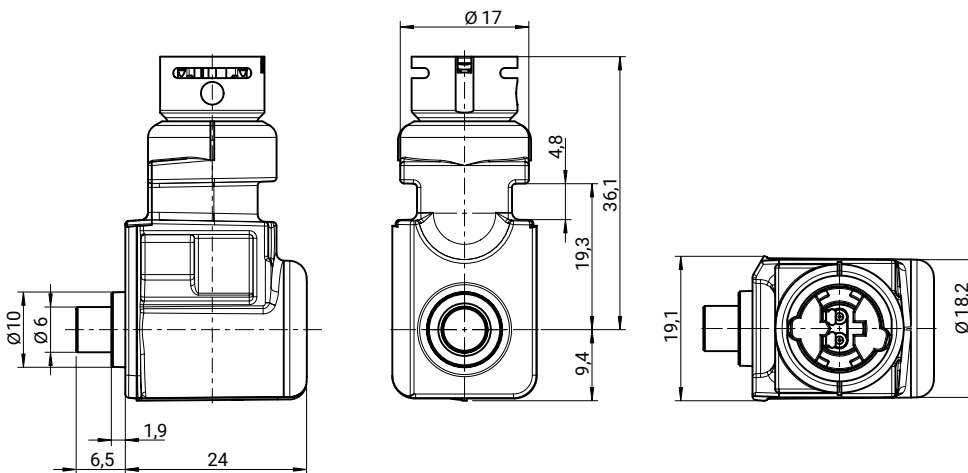
### Pyrotechnics:

Igniter type:	GTMS igniter
Igniter qualification:	acc. AK-LV16:2012 and USCAR-SAE28
Igniter resistance:	2.1Ω ± 0.4Ω
Igniter parameter "No fire"	≤0.4A ≤5A for ≤4μs

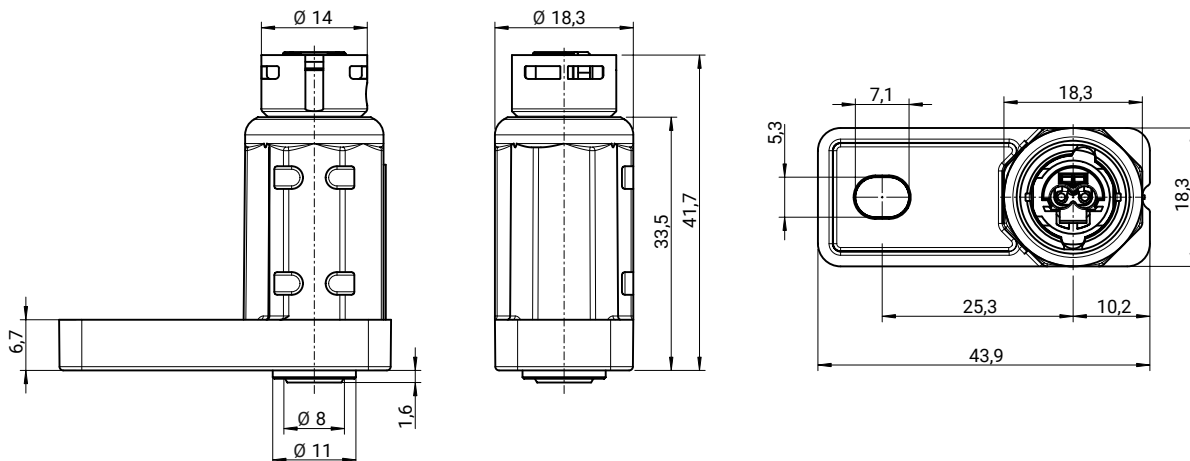
## Outline dimensions\*

\*in mm

Pin Puller:



Pin Pusher:



Any data, information, know-how, and any associated intellectual property shall be owned by Astotec. Astotec reserves the right to change, update or correct, without notice, the contents of this datasheet. Please note that its contents are not intended as binding specifications of the product, but rather as general information. Should you come across any errors or omissions we encourage you to contact us for further assistance. The information provided in our technical data sheets is to the best of our knowledge correct but not all-inclusive and without warranty. All rights reserved.



Astotec Automotive GmbH  
 Leobersdorfer Straße 31-33  
 2552 Hirtenberg /Austria  
 +43 2256 811 84  
[automotive.at@astotec.com](mailto:automotive.at@astotec.com)  
[automotive.astotec.com](http://automotive.astotec.com)